



## Excitement in the air!



**NEW! DOCK MOUNT KIT -**  
See back page



### **TROUBLE FREE!**

- Flexible fiberglass poles bend but won't break
- Swiveling yoke ensures tangle-free action
- Can be temporarily or permanently installed

### **EYE-CATCHING!**

- Instantly inviting, floating color in motion
- Dramatic effect up to 22 feet tall

### **PORTABLE!**

- Easy to install and take down
- Can ship standard ground
- Transport made easy with telescoping pole
- Wheel stand - perfect for tailgating!

### **VERSATILE!**

- Bright Solarmax® nylon pennant color choices
- Proven bird deterrent - people love them; birds don't!

# DORI POLE OPTIONS

Available in four size options, the Dori Pole pennant system offers a three piece 19', a two-piece 22', a two piece 13.5' and a two piece junior (JR) 12'. The three piece is the most popular offering both allure and the final height benefit proven effective as a bird deterrent.

## THREE PIECE TELESCOPING 19' DORI POLE

The three piece fiberglass pole extends from 7' 6" to 19', with rotating yoke and 14' long pennant. The three piece pole ships **via standard ground**.

**Standard pennant size: 14' x 24"**

The telescoping three piece Dori Pole is ideal for situations where portability and storage are a priority. Dori Pole will attract attention with its 14' long colorful pennant at festivals, events, racetracks, sporting events and even at homes and lake cottages - anywhere people are having fun!

## TWO PIECE TELESCOPING STANDARD 22' DORI POLE

The two piece fiberglass pole extends from 13' to 22', with rotating yoke and 14' long pennant. The telescoping aspect allows for varying heights when needed.

**Standard pennant size: 14' x 24"**

At 22' the two piece Dori Pole is three feet taller than the three piece Dori Pole and is perfect for long-running events. Ships via **motor freight**.

## NEW! TWO PIECE TELESCOPING MID-RISE 13.5' DORI POLE

Our new Mid-Rise Dori Pole is the in-between brother to the tall 19' pole and the shorter 12' JR pole. The Mid-Rise is designed for use with our 8' x 18" pennants but uses the same Standard Ground Stake, Ground Sleeve and vehicle Wheel Stand as the 19' and 22' poles.

**Mid-Rise pennant size: 8' x 18"**

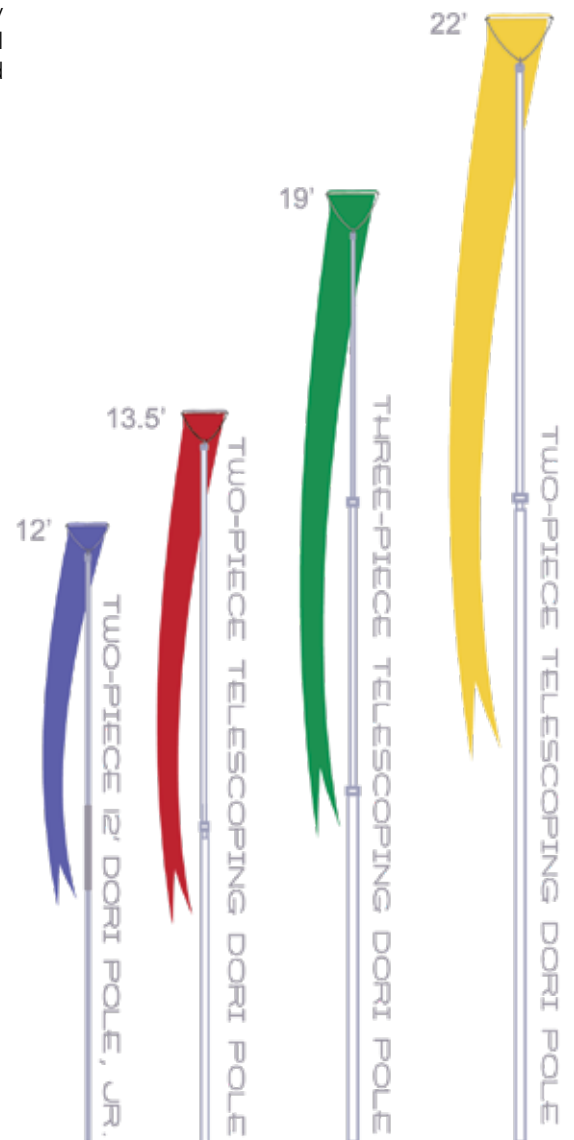
The new pole telescopes from 7' to 12.5' and becomes 13.5' when the pennant and arms are installed. It's a "sturdier" option than the JR as it resists swaying in the wind. Also, it's a perfect choice for tailgating with the Wheel Stand. Ships **via standard ground**.

## TWO PIECE 12' DORI POLE JR

The two piece 12' tall x 1/2" round fiberglass pole assembles easily from 6' to 12' with rotating yoke and 8' long pennant. Ships **via standard ground**.

**JR Pennant size: 8' x 18"**

Designed as a smaller version of the original Dori Pole, the JR works well as an eye catcher at open houses, big sales or special events - anywhere you want people to take note and join in the fun!



# PENNANT COLORS

There are 22 solid pennant stock color choices and 22 two-color combinations to choose from.

## Stock Solid Colors (available in 14' x 24" and 8' x 18")

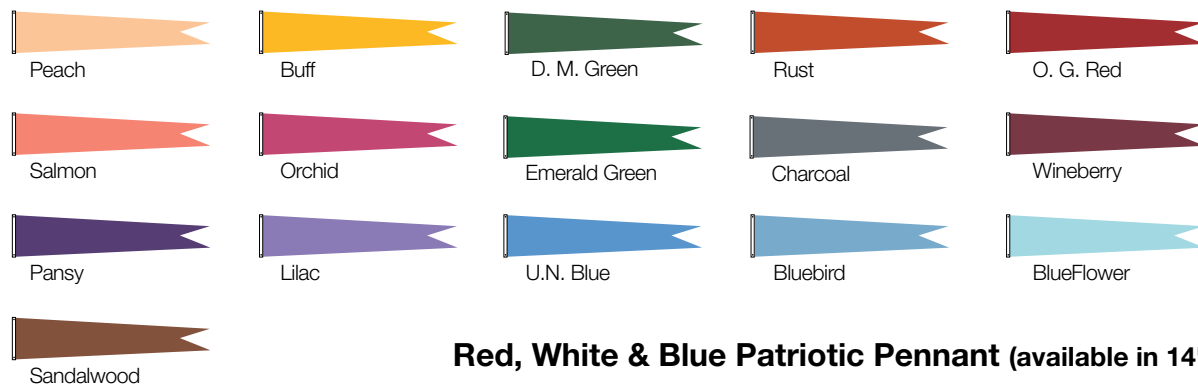


## Collegiate Color Combinations (available in 14' x 24" ONLY) • \*Also available in 8' x 18"



Pennants are easy to change. Buy extras to fit your mood or school spirit.

## Custom Solid Colors (available in 14' x 24" and 8' x 18")



## Red, White & Blue Patriotic Pennant (available in 14' x 24" and 8' x 18")

Patriotic 2



Dye Sublimation Pennants – See website ([www.doripole.com](http://www.doripole.com)) for better representation



Please call for more information and pricing.

Custom Color Pennants (available in both 14' x 24" and 8' x 18")

Custom Color pennants incur a \$25.00 upcharge per color and require a minimum order. Custom screen printed and color combinations also available.

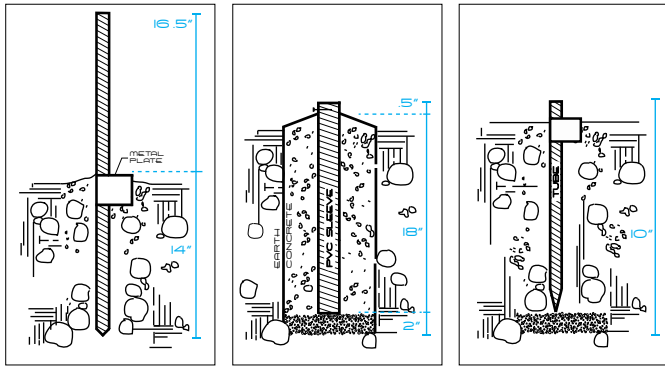
# INSTALLING THE DORI POLE

## On a temporary stake:

1. Stake should be driven deep enough so the top of the 90-degree angle metal plate is flush with the ground.
2. Place the aluminum bushing tube over the steel stake.
3. Lift the Dori pole straight up and over the tube

## For a permanent installation:

The hole should be 6" to 8" x 20" deep. After digging hole, place at least 2" of drainage gravel at bottom. Set the 1.5" x 18" (sched.80) PVC tube w/nail-stop positioned 1/2" from bottom. Sleeve should protrude 1" above ground surface. Backfill with quick setting post hole concrete, sloping downward for drainage.



### Ground Stakes

For temporary install of 13.5', 19' & 22' Telescoping Poles

### Ground Sleeves

For permanent install of 13.5', 19' For temporary & permanent install & 22' Telescoping Poles

### Ground Sleeves

For JR poles only

**Dori Pole Warranty Overview** – see [doripole.com/warranty](http://doripole.com/warranty) for complete information on Poles and Pennant warranties. Dori Pole products are warranted against defects in material and workmanship when installed and maintained according to Consort instructions. Warranty protection is voided when the product is used or installed in any manner contrary to Consort specifications or when the product is altered in any way. Dori Pole Yokes and Poles are warranted for one year when subjected to winds of 35mph or less. Dori Pole pennants are warranted for 30 days in winds of 35mph or less. Please see [doripole.com/warranty](http://doripole.com/warranty)

## Attaching the pennants to the yoke:

1. Lay the pennant flat. Position the arms as shown, so the spring loops through the grommet and pulls to the outside as shown in **Figure A**.
2. Slide each arm into the yoke by arching the fiberglass rod enough to create tension. Make sure the rods have been **fitted completely** into the yoke.
3. The pennant should lay on the side away from the nose of the yoke as shown in **Figure B**.

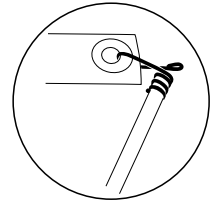
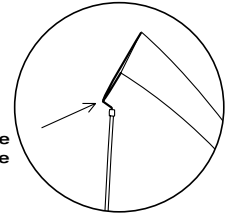


Figure A

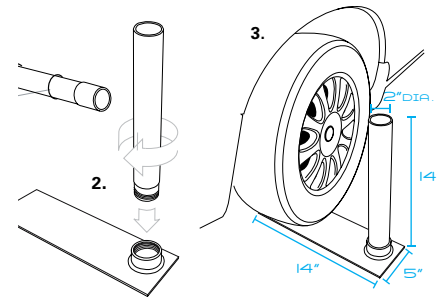


Yoke nose

Figure B

## Wheel Stand - perfect for tailgating!

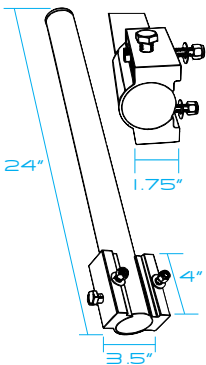
1. Install the supplied O-rings at base of pole just above the collar.
2. Twist the tube into the base flange until tightened.
3. Ease the car tire over the intended place on the base. Place the Dori Pole into the tube.



Wheel Stand  
DP-WS  
DP-WSJ (for JR poles)



## Dock Mounting



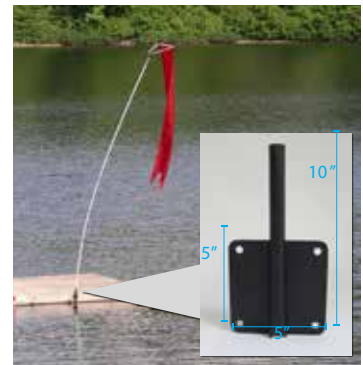
### NEW Dock Mount Kit

Complete with bolts & Dock Pole Bushing



### Dock Mount Bracket

This bracket attaches your 2" aluminum pipe to dock stringer



### JR Dock Mount

For permanent install of Dori Pole JR



More detailed instructions are available online & provided with order.

